



**Doppelkonzert für zwei Violinen d-Moll
Johann Sebastian Bach (1685-1750)
BWV 1043**

Continuo

Doppelkonzert für zwei Violinen d-Moll

Continuo Johann Sebastian Bach (1685-1750)

Vivace

4

7

11

14

17

20

23

27

31

35

39

1

A

B

43

47

50 **C**

55

59 **D**

63

67 **E**

71

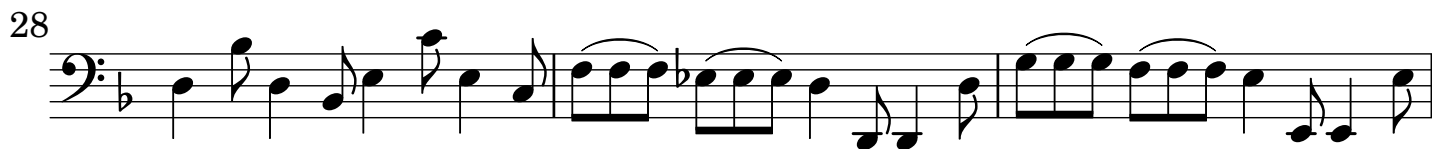
75 **F**

79

83

86

Largo e poco piano



Allegro

Musical score for Continuo, Allegro, measures 6-67. The score is written in bass clef, 3/4 time, and B-flat major. It consists of ten staves of music, each starting with a measure number. The score includes various musical notations such as slurs, ties, and dynamic markings. Section markers A, B, C, D, E, and F are placed above the staves at measures 11, 18, 29, 36, 48, and 61 respectively. A dynamic marking *p* is present at measure 23.

6

11 **A**

18 **B**

23 *p*

29 **C**

36 **D**

42

48 **E**

54

61 **F**

67

72

G

83

H

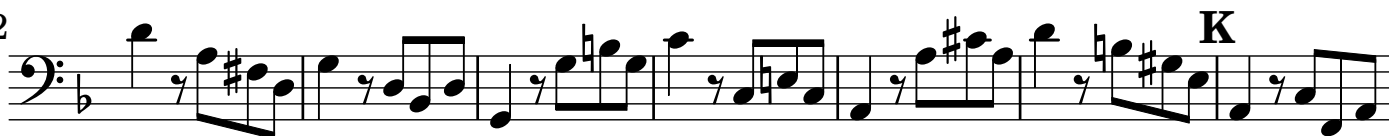
90



96

J

102

**K**

109



118

L

126



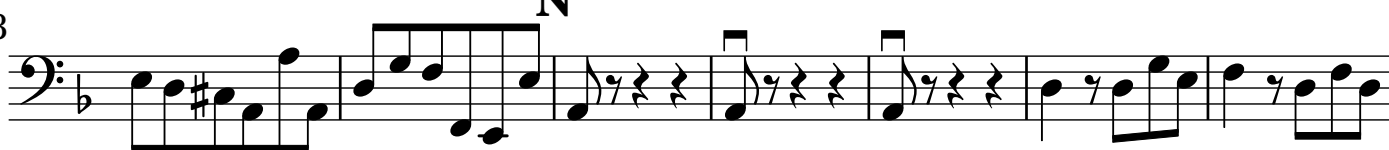
131

M

137



143

N

150

